



# CLEAR THINKING

CLEARLAKECONSERVANCY.ORG

NOVEMBER 2024 | ISSUE NO.57

## OUR LETTER



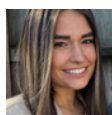
## EMBRACING THE SEASON

The leaves fall, the air turns crisp, and we embrace another season to rest and reflect. We find comfort in the cold days spent indoors with a good book and the calm that comes with an early sunset. Our habits shift with the seasons as we use these colder months to slow down, recharge, and plan for the year ahead. At the Conservancy, this time allows us to reflect on our progress and prepare for what's next.

Our commitment to preserving, protecting, and managing our natural environment for future generations requires careful planning. As the new year approaches, our Board of Directors is finalizing our next Strategic Plan, outlining key goals in water quality, watershed protection, and sustainability for the coming years. We will share the Strategic Plan on our website in January.

In tandem, our committees and staff are beginning to design volunteer projects and educational programs for the upcoming year. Are you thinking about joining our clean-up crew on a specific land preserve? Is there an environmental topic you'd like to explore further? We'd love to hear from you! Let us know what you'd like to see or how you'd like to get involved next year at [info@clearlakeconservancy.org](mailto:info@clearlakeconservancy.org).

Warm holiday wishes and a happy new year,



**Caroline Barth**  
*Executive Director*



**Doug Mulvaney**  
*President*

### BOARD OF DIRECTORS

**Doug Mulvaney**  
*President*

**Ann DeWert**  
*Secretary*

**Barb Wenger**  
*Vice President*

**Tim McArdle**  
*Treasurer*

**Susan Connett**

**Karen Horrell**

**Zach Dean**

**Bruce Matasick**

**Bill Geiger**

**Dan Rippe**

**Bill Greffin**

**Matt Timmer**

**Katy Hoehn**

**Nancy Webster**

### STAFF

**Caroline Barth**  
*Executive Director*

**Tracy Hughes**  
*Program Assistant*

**Joseph Bernard**  
*Land Steward*

### COMMITTEES

Development

Executive

Finance

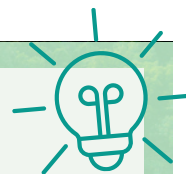
Lands

Outreach & Education

Water Quality

## KNOW YOUR CONSERVANCY

Exploring the various committees and roles within the Conservancy, this month's newsletter features the Finance Committee.



### FINANCE COMMITTEE

The Finance Committee is made up of Board Members and volunteers that bring experience in a variety of financial topics. This committee meets monthly to review, advise, and oversee the financial operations of the organization.

2024 FINANCE COMMITTEE MEMBERS: Tim McArdle (chair), Susan Connett, Judy Greffin, Karen Horrell, and Doug Mulvaney





A PLUME OF SEDIMENT FROM CYRUS BROUSE  
DITCH ENTERING CLEAR LAKE IN JUNE 2022.  
PHOTO BY ECOSYSTEMS CONNECTIONS INSTITUTE.



THE HARRY TEETERS WATERSHED GAGE  
STATION THAT AUTOMATICALLY COLLECTS  
WATER SAMPLES FOR ANALYSIS.

## UPDATES FROM THE WATERSHED DIAGNOSTIC STUDY

Our Watershed Diagnostic Study is entering its third year, and we continue to gain deeper insights into our water quality and environmental factors. In 2021, we partnered with Ecosystems Connections Institute to begin studying our lake and surrounding watershed, which led to the launch of an extensive monitoring program in 2022.

The study started with a basic understanding of the Clear Lake watershed, divided into the five largest subwatersheds that feed the lake: Cyrus Brouse, Peter Smith, Alvin Patterson, Lake Anne, and Harry Teeters subwatersheds. We began collecting samples from these inlets and various points within the lake to track the transport of phosphorus and sediments from the watershed.

Data analysis so far shows that the Cyrus Brouse and Harry Teeters subwatersheds contribute the largest amounts of sediment and phosphorus, especially during the spring and early summer months. Within the lake, seasonal changes in dissolved oxygen levels and water clarity are evident. These factors—excess sediment and phosphorus, dissolved oxygen levels, and water clarity—are crucial to the health of the ecosystem and our enjoyment of the lake.

The Watershed Diagnostic Study will continue through 2025, building on current data. As our environment responds to shifting weather patterns and seasonal changes, this study will help us make informed decisions about water quality improvement and watershed protection. If you're interested in supporting or learning more about this study, contact Caroline Barth at [director@clearlakeconservancy.org](mailto:director@clearlakeconservancy.org).

## MEET THE TEAM



### JOSEPH BERNARD

If you've visited our preserves recently and noticed a new face, you may have met our Land Steward, Joseph Bernard.

Joe moved to the area from Southeast Minnesota with his wife Kristen, their 2.5-year-old son Dillon, and their hound dog Gryff. Originally from Ohio, he's excited to be closer to family. Joe enjoys hiking, camping, native gardening, and reading. His favorite tree is the Swamp White Oak, which can live for 900 years and serves as a host plant for more than 500 species of moths and butterflies.

Joe joins our team as a dedicated environmentalist, passionate about the care and maintenance of natural spaces. He brings a wealth of experience from his previous work with The Nature Conservancy in Ohio and Minnesota as a Preserve Management and Stewardship Assistant, having worked across a variety of Midwest landscapes. In addition to stewardship, Joe is enthusiastic about educating youth and adults on environmental issues. This winter, he will focus on becoming familiar with our 19 preserves, planning invasive species removal projects, marking property boundaries, and improving trail conditions. Welcome to the team, Joe!

# NEW DONOR MATCH & LEGACY SOCIETY: MAXIMIZE YOUR GIFT FOR CLEAR LAKE

Your support forms the heart and soul of our organization. Our work thrives because of generous donations over the past 33 years, and we deeply appreciate your continued commitment as we move into another exciting year. Right now, we have two limited-time match opportunities available until December 31, 2024.

## NEW DONOR MATCH SPONSORED BY BARB WENGER

All NEW DONORS will have their gifts matched dollar for dollar until we reach \$20,000 in total matches. This is an ideal opportunity for new residents, family, and friends who love our lake and want to contribute to preserving this beautiful place.

## LEGACY SOCIETY BEQUEST CHALLENGE ANONYMOUS SPONSOR

For every new member of the Legacy Society, we will receive a \$1,000 unrestricted donation NOW, for up to 25 members. If you're considering leaving a legacy through your will/estate plans, visit our website for more information about the Legacy Society or contact our office. With 16 current members, we'll share the final count for the Bequest Challenge in January.



LAND.  
WATER.  
LEGACY.



SCAN THE QR CODE  
TO DONATE TODAY!  
[CLEARLAKECONSERVANCY.ORG  
/DONATE](https://CLEARLAKECONSERVANCY.ORG/DONATE)



## THANK YOU FOR YOUR SUPPORT!

Greg and Paula Bosler

American Endowment Foundation on behalf of Gary and Cheri Darling

Nancy Fenton and Rich Karlsson

C.J. Getz and Laura Szynal

Holley Horrell and Craig McDonnell

Emily Hughes

Josie Kramer

Rory and Amy Kramer

Julie Monson & Gary Thompson

Fran Rehm

Cole Russert and Gemma Glasser

Barbara Spangler

Matt and Claire Timmer

Nancy and Bob Webster

### MEMORIALS

**M: Sarah and Bill Bolger**  
Barb and Ed Disser

**M: Andy and Jacquie Fitzenrider**  
Jon Fitzenrider

**M: Jane Kaiser**  
Tom Kaiser

### MEMORIAL - WATERSHED DIAGNOSTIC STUDY

**M: Byram Dickes**  
Sue Hadley Dickes & Nancy Hadley Wilhelm

### AQUATIC VEGETATION MANAGEMENT

Susie Compo

### GRANT SUPPORT

Clear Lake Association

Lincoln Financial Foundation employer match made possible by Jim Horein

PayPal Giving Fund

Steuben County Community Foundation

### IN-KIND SUPPORT

The Boathouse Boutique

Essentially Clean & More

### CONSERVANCY SUSTAINERS

Alex and Susan Connett

Susanne Cusick with employer match from AbbVie

Zach Dean and Kevin Mangum

Jack and Karen Horrell

Kathy Latz

Tim and LuAnn McArdle

Doug Mulvaney and Jennifer Nielsen

Terry and Koggy Newcomb

Deborah and Erik Oiler

Tom and Jenny Parker

Nancy and Bob Webster

\*List reflects contributions received between August 24, 2024 - October 20, 2024. Contact us if you see a mistake.

**M:** = Memorials





THE CLEAR LAKE TOWNSHIP LAND CONSERVANCY  
111 GECOWETS DRIVE  
FREMONT, INDIANA 46737  
[clearlakeconservancy.org](http://clearlakeconservancy.org)

NON PROFIT ORG.  
U.S. POSTAGE PAID  
FORT WAYNE, IN  
PERMIT NO. 760

# CLEAR THINKING

NOVEMBER 2024 | ISSUE NO.57

## GLOSSARY TERMS TO KNOW

**LAND MANAGEMENT (STEWARDSHIP):** Preserving or remediating land and water quality by various techniques including forest health improvement, invasive species control, selective tree harvest, prescribed burns, and mowing.

## MISSION STATEMENT

We preserve, protect, & manage the natural environment within the Clear Lake Watershed and Township for future generations.

**VOLUNTEER | CONTACT | DONATE**

[clearlakeconservancy.org](http://clearlakeconservancy.org)  
or call (260) 527-1072



## HOLIDAY GIFTS

**GIVE THE GIFT OF CONSERVATION THIS SEASON!**  
Our office has 2025 calendars, mugs, sweatshirts, sun shirts, t-shirts, caps, and flags for all of your gifting needs.

CHECK OUR WEBSITE FOR MORE DETAILS OR  
**SCAN THE QR CODE**

